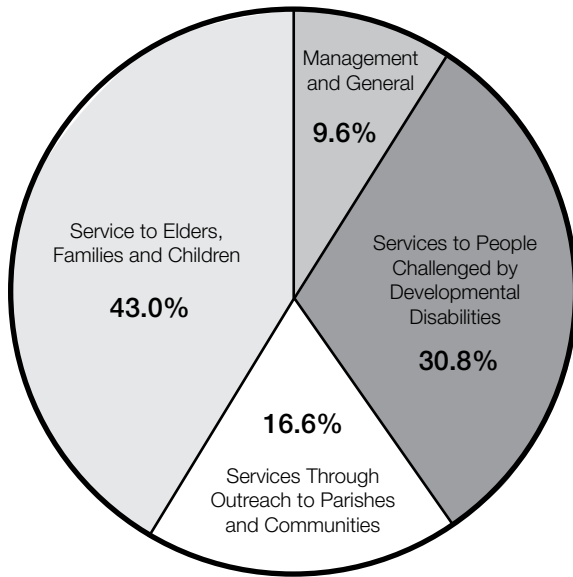
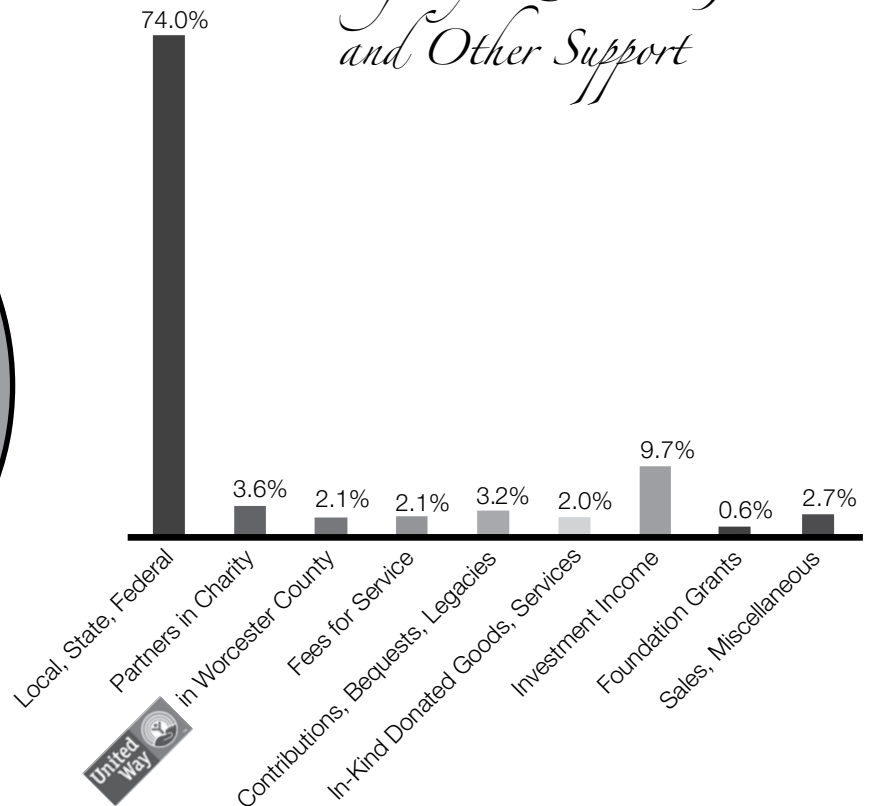


Service Cost by Category



Total Agency Revenues, Gains and Other Support



Rejoice and be glad

Athol

12 Riverbend Street
Athol, MA 01331
978-249-4563
1-800-244-4563

Crozier House

10 Hammond Street
Worcester, MA 01610
508-798-0191

Leominster

196 Mechanic Street
Leominster, MA 01453
978-840-0696
1-800-232-0843

Mercy Centre

25 West Chester Street
Worcester, MA 01605
508-852-7165

Milford

126 Main Street
Milford, MA 01757
508-478-9632
1-800-649-4364

Southbridge

79 Elm Street
Southbridge, MA 01550
508-765-5936

Whitinsville

9 Spring Street
Whitinsville, MA 01588
508-234-3800
1-800-649-4364

Worcester

10 Hammond Street
Worcester, MA 01610
508-798-0191

Youville House

133 Granite Street
Worcester, MA 01604
508-753-3084



Catholic Charities

10 Hammond Street
Worcester, MA 01610
(508) 798-0191

For more information
please visit our website at
www.ccworc.org

Catholic Charities of the Diocese of Worcester Audited Fiscal Report

July 1, 2010 – June 30, 2011

	Unrestricted	Temporarily Restricted	Permanently Restricted	Total
Local, State and Federal Government Revenue	7,336,949			7,336,949
Partners in Charity	358,333			358,333
United Ways Serving Worcester County	204,756	2,500		207,256
Fees for Service	208,083			208,083
Contributions, Bequests and Legacies	296,301	17,603	1,745	315,649
In-kind Donated Goods and Services	198,822			198,822
Investment Income				
Interest and Dividends	247,315	9,473		256,788
Realized Gain on Investments	66,524	1,411		67,935
Unrealized Gain on Investments	635,905			635,905
Foundation Grants	18,444	35,200		53,644
Sales and Miscellaneous	270,337			270,337
Total	9,841,769	66,187	1,745	9,909,701
Net Assets Released from Restrictions				
Satisfaction of Program Restrictions	133,439	(133,439)		-
Total Revenues, Gains and Other Support	9,975,208	(67,252)	1,745	9,909,701
Services to People Challenged by Developmental Disabilities				
Mercy Centre Special Education	1,409,334			1,409,334
Mercy Centre Job Training and Employment Services	493,388			493,388
Mercy Centre Community Based Adult Day Services	346,493			346,493
Mercy Centre Day Habilitation Program	579,987			579,987
Total	2,829,202	-	-	2,829,202
Services Through Outreach to Parishes and Communities				
Literacy Services	213,316			213,316
Crozier House for Men Recovering from Substance Abuse	534,886			534,886
Refugee Services	146,770			146,770
Bishop's Thanksgiving and Christmas Dinners	36,117			36,117
Counseling and Community Services Programs	592,665			592,665
Total	1,523,754	-	-	1,523,754
Services to Elders, Families and Children				
Home Care	1,350,518			1,350,518
Senior Aide Employment	1,615,536			1,615,536
Adoption Information and Referral	39,862			39,862
Parent Aide and Education	224,181			224,181
Youville House Emergency Shelter for Families	522,774			522,774
Homeless Prevention	198,884			198,884
Total	3,951,755	-	-	3,951,755
Management and General	891,102			891,102
Total Expenses	9,195,813	-	-	9,195,813
Change in Net Assets	779,395	(67,252)	1,745	713,888
Net Assets Beginning of the Year	4,824,194	525,155	2,673,508	8,022,857
Net Assets End of the Year	5,603,589	457,903	2,675,253	8,736,745